



PRO 800-5

QUICK REFERENCE CARD MAINTENANCE TIPS



WE RECOMMEND CLEANING THE PROCESSOR UNIT AFTER EACH PROCESS

The **Processor Unit** has been tested to withstand the following cleaning agents and disinfectants:

- ASP Cidex®
- EcoLab Indicin® Liquid
- Dr. Schumacher Optisept®
- Isopropyl alcohol
- Peroxides

**DO NOT
USE SPRAY
CLEANERS
!!!**

Please note that you can **not** use alcohol (ethanol) > 96% when cleaning the **Processor Unit**

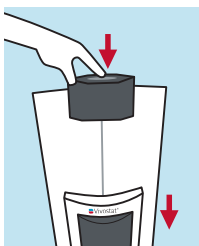


Warning: the heater lamp area may still be hot!

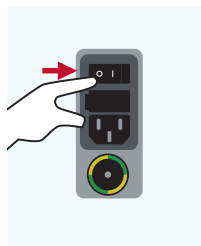


Warning: the Processor Unit may contain biohazardous materials, such as body fluids. Perform cleaning according to universal blood handling precautions.

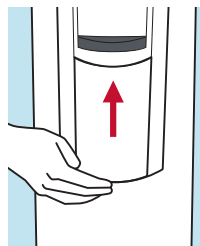
DISMANTLE AND CLEAN BOTTOM COVER, SAFETY SHIELD AND CENTRIFUGE AREA



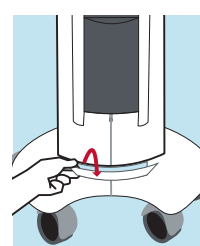
1. Press button to open shield



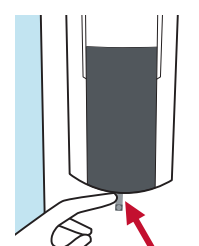
2. Turn OFF mains power switch



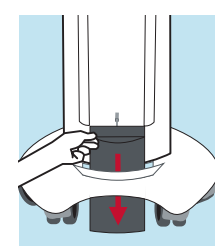
3. Push bottom cover upwards, release and move



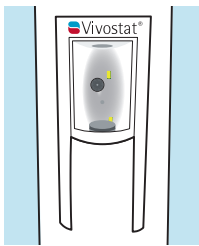
4. Open slid in Base Plate



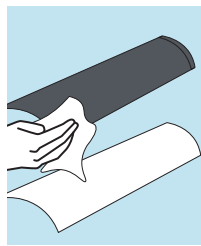
5. Press spring



6. Tip unit backwards. Slide shield downwards



7. With unit tipped and shield out of the guides, it can be removed



8. Clean cover and shield with cleaning agent and dry with soft cloth

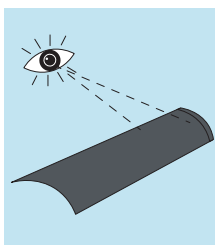


9. Clean centrifuge area with soft pre-moistened cloth, allow to dry

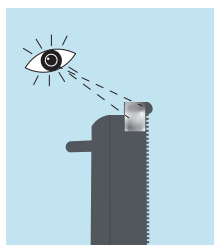
The internal surfaces houses sensors, which are very delicate and require great caution in the cleaning process. Use a very gentle rubbing action until all residual disinfectants are removed from the sensor area. Use Isopropyl or one of the other approved disinfectants to completely remove all streaks and residue from sensor windows / light guides.

Inspect sensor area to ensure it is clean and dry and no lint or fibres remain on sensor surfaces.

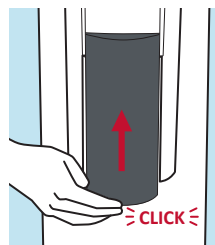
INSPECT SAFETY SHIELD AND SEAL – REMOUNT PARTS



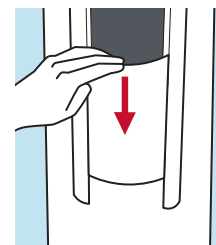
10. Inspect shield for cracks or other damage



11. Observe the aluminium tape is firmly placed on upper left side



12. If both are intact, re-install shield, slide into guides, correct when it "clicks"



13. Remount bottom cover, fit between guides and push downwards

If cracks or damages are found, contact your local distributor or Vivostat A/S.

CLEAN EXTERNAL SURFACES

14. Wipe the outer surface with a soft pre-moistened cloth, observe not to scratch the display housing

THIS QRC NEED TO BE READ IN CONJUNCTION WITH THE PRODUCT IFU AND MACHINE MANUAL.

For IFUs and manuals, QRC language versions and much more, please visit our website: www.vivostat.com/preparation-now



Vivostat A/S
Borupvang 2
3450 Allerød
Denmark

+45 8880 8400
info@vivostat.com
www.vivostat.com