



PART 1 – PREPARE DISPOSABLE APPLICATOR DEVICE AND APPLICATOR UNIT

Turn ON Applicator Unit on the back and connect foot switch



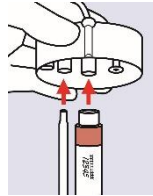
1. Place 21g needle just inside pH 10 vial, draw fluid into 1 ml syringe



2. Transfer disposable applicator + pH-paper to sterile area



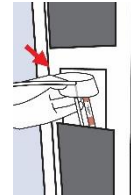
3. Transfer syringe holder out of sterile area



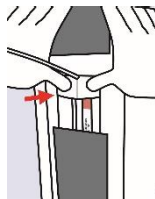
4. Insert pH 10 and Vivostat® Fibrin syringes into syringe holder



5. When indicated in display, open shield



6. Insert and position syringe holder



7. Press syringe holder into cavity using two fingers



8. Close shield

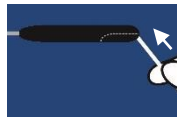
CAUTION:

To avoid air bubbles impacting mixture negatively do NOT push needle to the end of pH 10 vial in Step 1

PART 2 (OPTIONAL) – LOAD CATHETER IN STERILISED ENDOSCOPIC APPLICATOR HANDLE



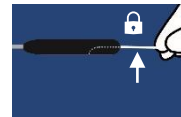
1. Place endoscopic catheter tip at the end of handle



2. Load and push endoscopic catheter entirely through



3. Adjust endoscopic catheter for the right position - all angles are possible

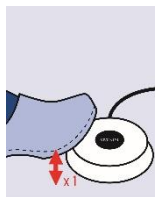


4. To lock position push catheter up until it "clicks"

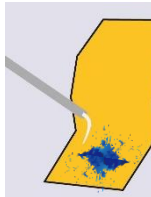
PART 3 – LOAD SYRINGES, PRIME AND INITIATE APPLICATION



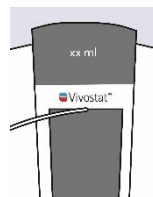
1. Press button to start loading syringes



2. Press foot switch once to prime



3. Point to lower corner of pH-paper while auto-priming



4. Autoprime stops automatically and ml + spray mode is displayed



5. Verify correct mixture on pH-paper (from liquid to viscous in 10-30 sec.)



6. Ready for application