



# Vivostat® Fibrin Sealant Preparation Kit

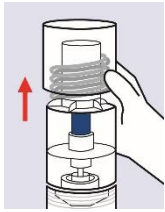
## Quick Reference Card



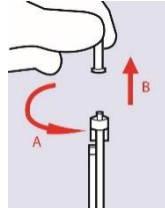
PRO 800 Series

Local language versions are available for download on [www.vivostat.com/qrc](http://www.vivostat.com/qrc)

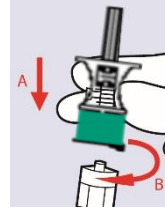
### PART 1 – PREPARATION BEFORE PATIENT INVOLVEMENT (approx. 1 minute)



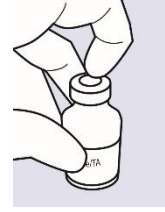
1. Remove outer lid



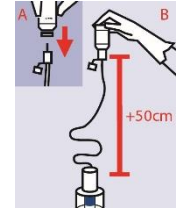
2. Remove cap from tube



3. Open snap cap, screw spike on tube, remove spike cap

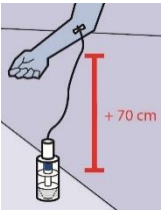


4. Remove citrate cap

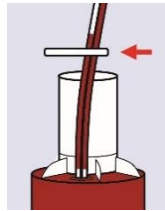


5. Flip citrate cap, pierce with spike and empty vial

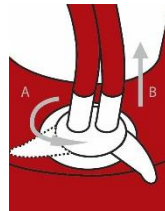
### PART 2 – DRAW BLOOD FROM THE PATIENT (approx. 5 minutes)



1. Secure vascular access and draw 120 ml blood



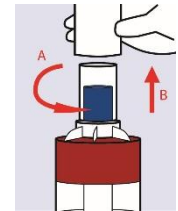
2. When prep unit is filled, clamp tube



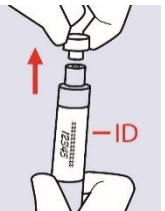
3. Turn to close valve properly and remove tube



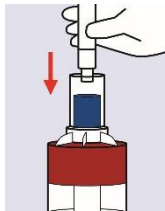
4. Clean valve with sugi swabs



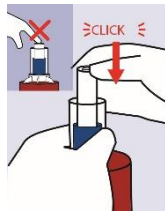
5. Remove lid



6. Take syringe, add patient ID and remove lid



7. Insert syringe in prep unit



8. Click into place without pressing syringe plunger

To avoid leakage and machine errors be careful:

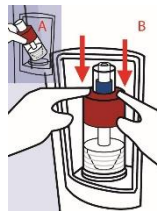
- 1) Not to use too high pressure on blood flow, when filling prep unit
- 2) Not to overfill prep unit
- 3) To close and clean valve carefully

### PART 3 – PROCESS THE PATIENT'S BLOOD (approx. 25 minutes)

Turn ON Processor Unit on the back



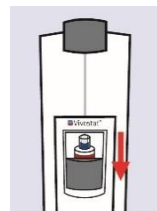
1. Press button to open shield



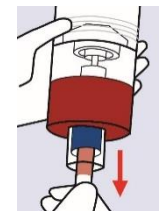
2. Place prep unit securely



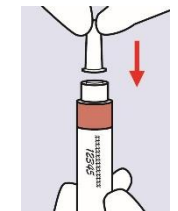
3. Close shield, press button and processing starts



4. When complete, take out prep unit



5. Flip prep unit and remove syringe



6. Put on cap

Vivostat® Fibrin Sealant is now ready-to-use and can be applied with the Vivostat® Applicator. Follow separate Vivostat® Fibrin Sealant Application Kit - Quick Reference Card.